



WAKEFIELD PUBLIC SAFETY BUILDING

ANNUAL TOWN MEETING

SPRING 2018

PUBLIC SAFETY BUILDING



- PD side used existing structure for a renovation. It is a 68 year old building
- FD side is a 15 year old building, and extends out to sidewalk
- This resulted in unusable and much needed space for PD





1950

26 Officers

2018

47 Officers



INDEPENDENT STUDY PUBLIC SAFETY BUILDING

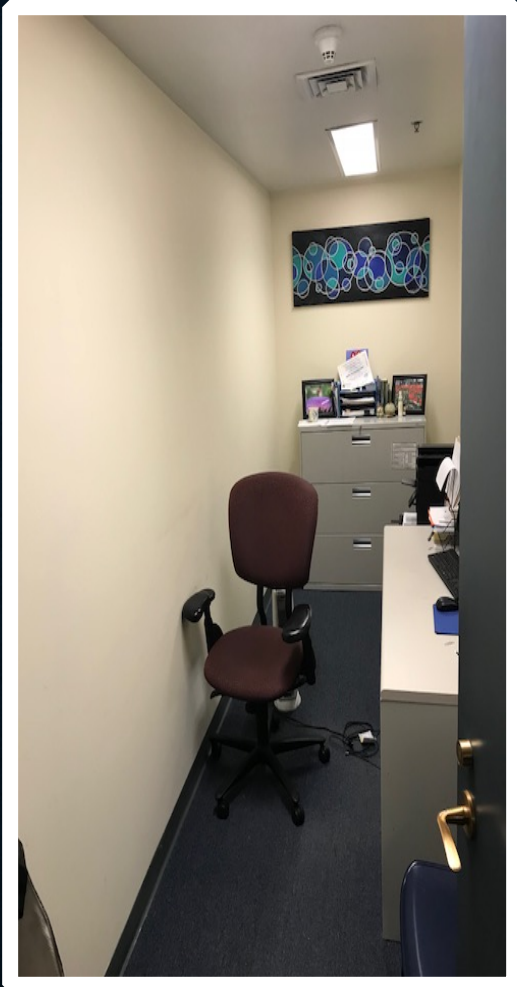
- Police Department is undersized by 40%
- Front lobby area – Accessibility & Safety Issues
- Water leaks creating critical risk to IT equipment
- Environmental issues
- Evidence Storage Room not located in proper area
- Overall layout not conducive to best practices
- *Analysis determined that the most efficient and cost effective means to add usable space would be through structurally independent horizontal addition adjacent to the existing building.*

EXISTING LOBBY

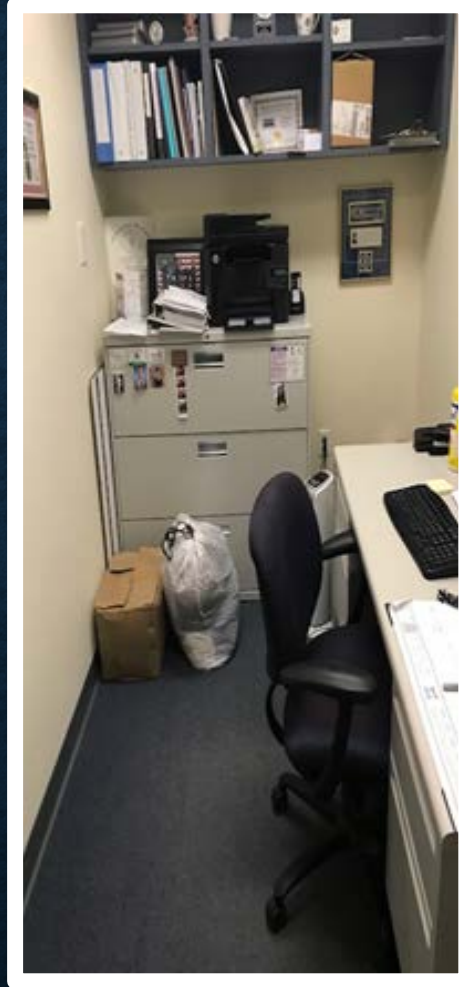


- Entry sequence: Speaking to either FD or PD personnel is not a simple process, we have had to add multiple signs.
- PD Records Officers constantly directing walk-ins looking for FD.
- Citizen needing immediate help when Records Office is closed must rely on a telephone

EXISTING PD FIRST LEVEL



CLINICIAN



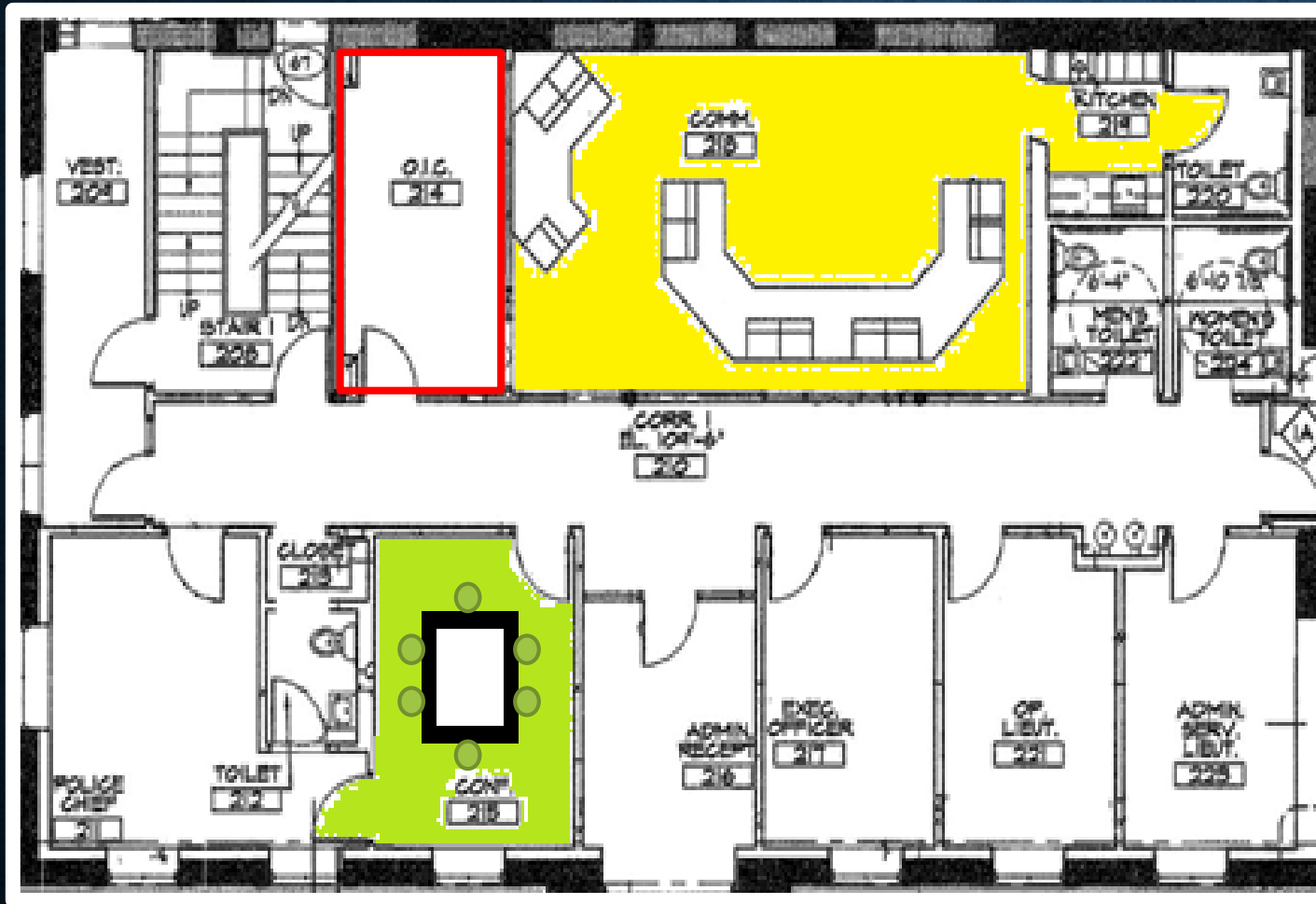
FAMILY SERVICES



K-9

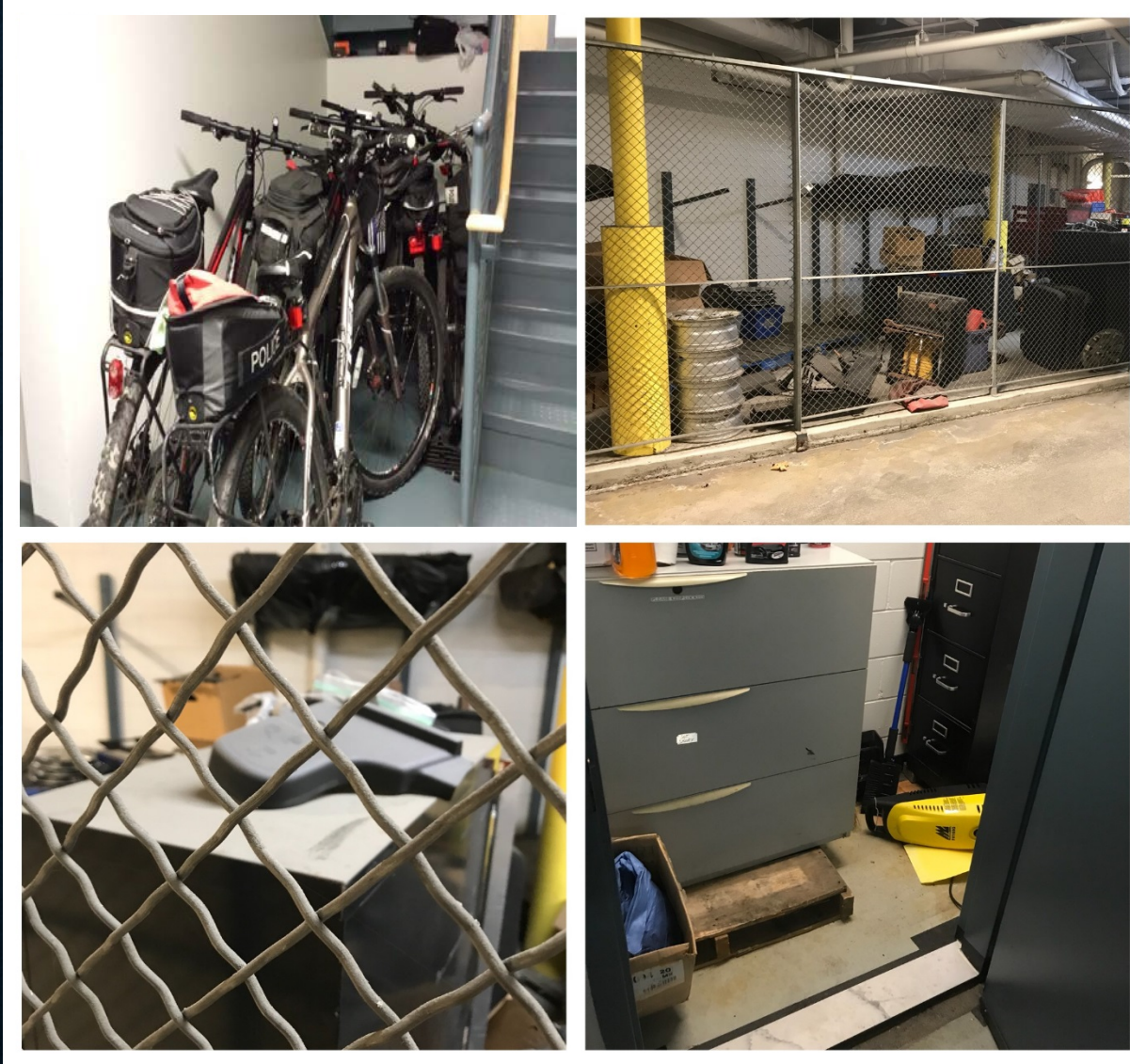
- Locker Rooms – Poor use of space, unusable lockers due to columns. No room for additional officers
- Two small storage rooms (5' wide) in basement originally used for armory work room and arms storage now occupied by personnel
- K9 equipment/gear stored in Water Services room in garage
- Roll Call Room – Far too small for daily briefings/training

EXISTING SECOND FLOOR PLAN



- Location of Dispatch on upper level does not meet the needs of the Community
- Small Sergeants Office converted into needed patrol equipment room
- Administrative offices are in busiest area, not conducive to privacy/confidentiality
- Only PD Conference Room is far too small, holds 4-6 people. Unable to hold meetings

STORAGE



- Bicycles and other equipment used daily stored in hallways.
- Recovered Property Room is unusable, items become filthy.
- Some items up on blocks due to water damage.
- We do have other equipment stored off-site.

VENTILATION SYSTEM



- Air duct system has had black soot flowing through for many years.

2003 POLICE BUILDING "ADDITION"

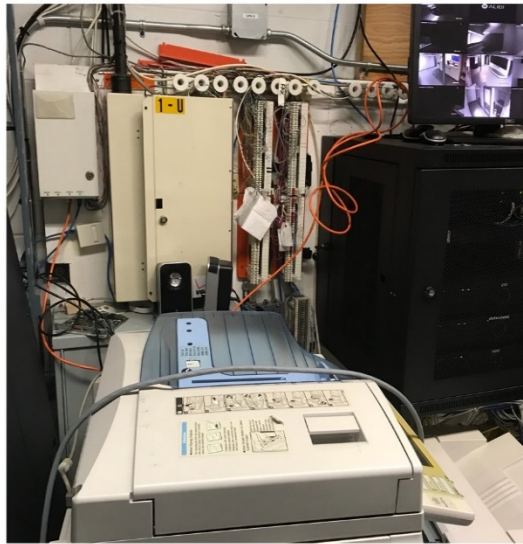
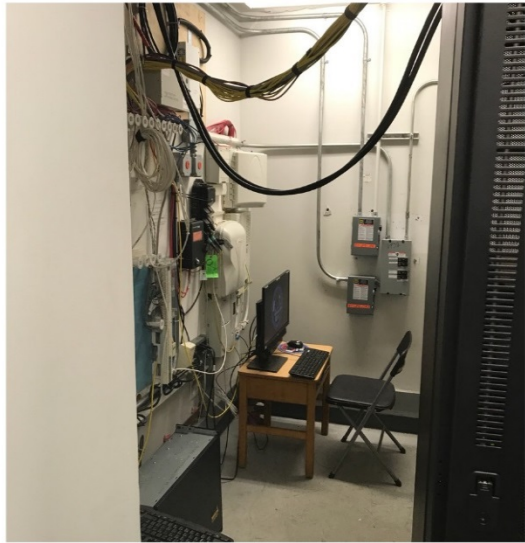


PRISONER BAY



- Prisoner Bay too small and is a safety issue.
- Security door must remain open in order to allow enough clearance to remove prisoner from rear compartment.
- Support columns were used as opposed to beams.
- Bicycle Room had to be converted into Armory due to lack of space, and it is not up to code.

2003 POLICE BUILDING "ADDITION"



- Most of the additional space from the previous renovation resulted in unusable space for PD operations.
- 911 Room, Electrical Room, Water Room, Generator Room, Radio System Room, IT Room, all for the Public Safety Building are located on PD side.
- Water leaks from roof in several areas, including IT Equipment room.

NEW ADDITION 2018

UNION STREET (FRONT)



CRESCENT STREET (REAR)



HIGHLIGHTS

- Front of PD bumped out to match FD side.
- New entry will provide easy flow of foot traffic for citizens to access PD or FD.
- 24 hour access for citizens in lobby with new dispatch center location.
- Addition will create a facility built for both present and future.



1950

2018



FIRST FLOOR PLANS



SECOND FLOOR PLANS



THIRD FLOOR PLANS

